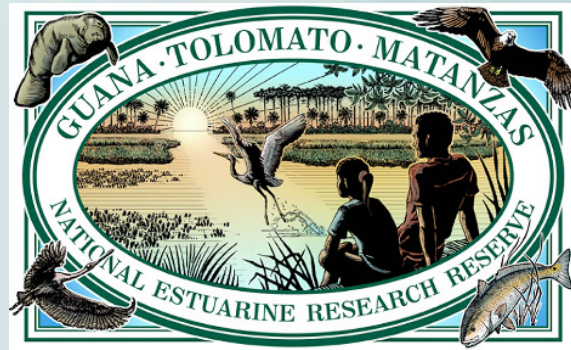
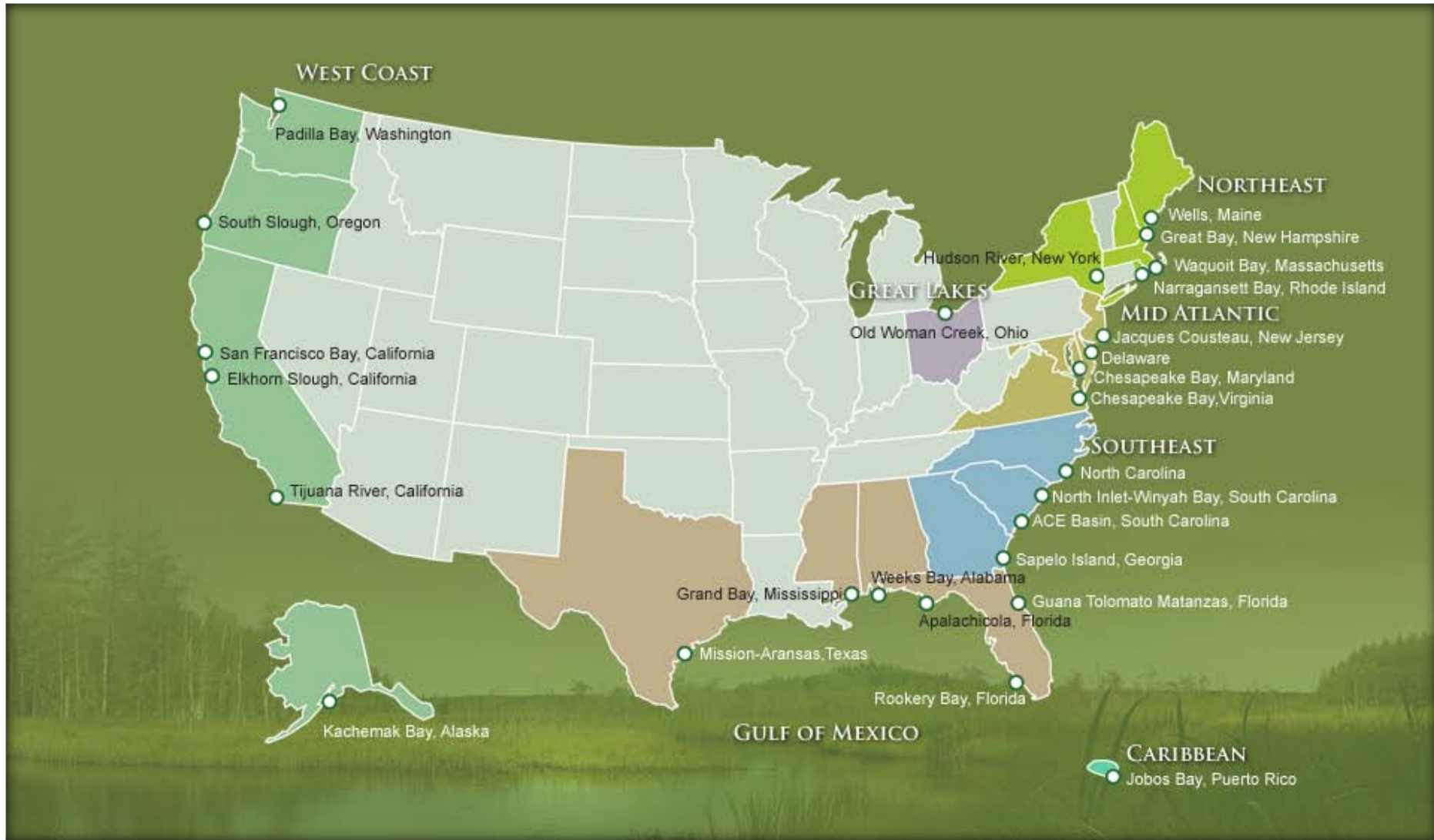


# Florida Department of Environmental Protection



## *Planning for Sea Level Rise in the Matanzas Basin*



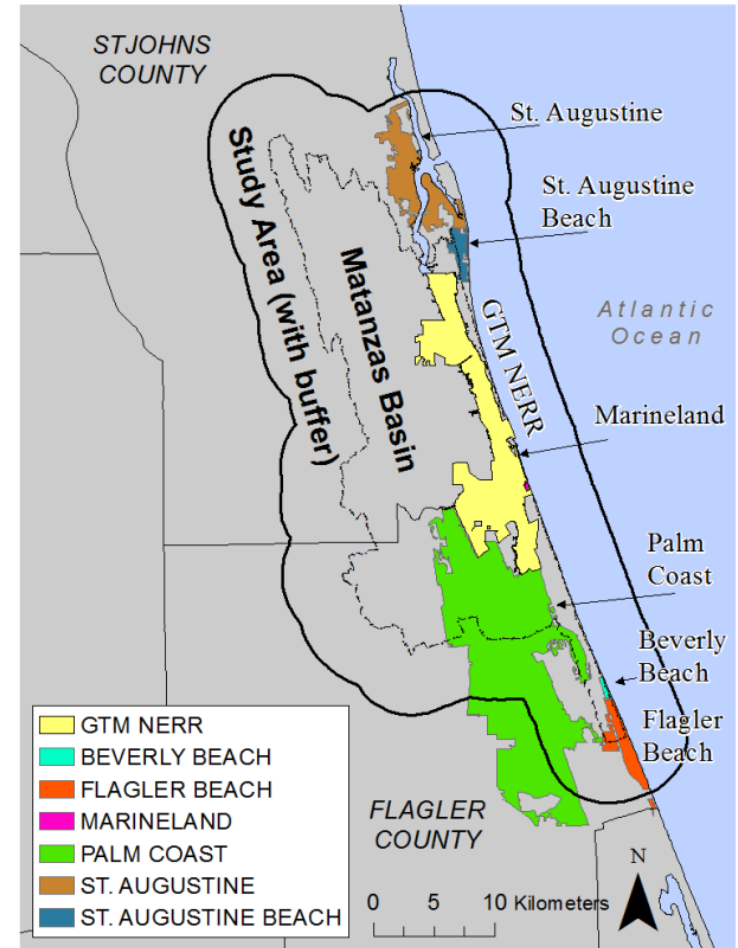
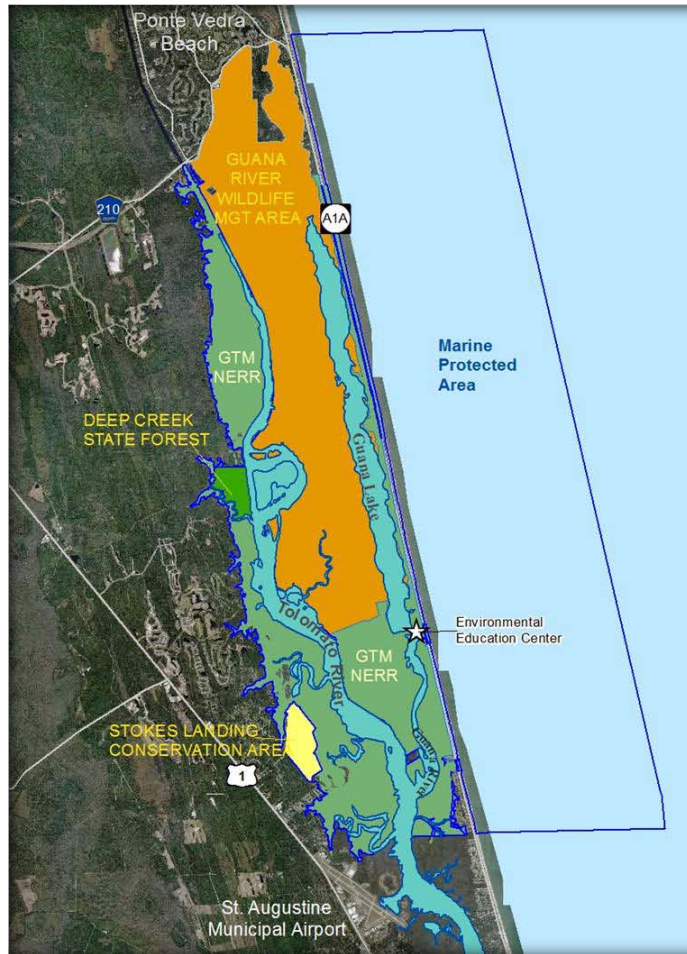


# A Network of Public Lands

## Two Components: Approximately 73,000 Acres

The GTM NERR is comprised of a network of public lands managed by:

- GTM NERR
- Florida Fish & Wildlife Conservation Commission
- Flagler County
- St. Johns River Water Management District
- Florida State Parks
- Florida Forest Service
- National Park Service







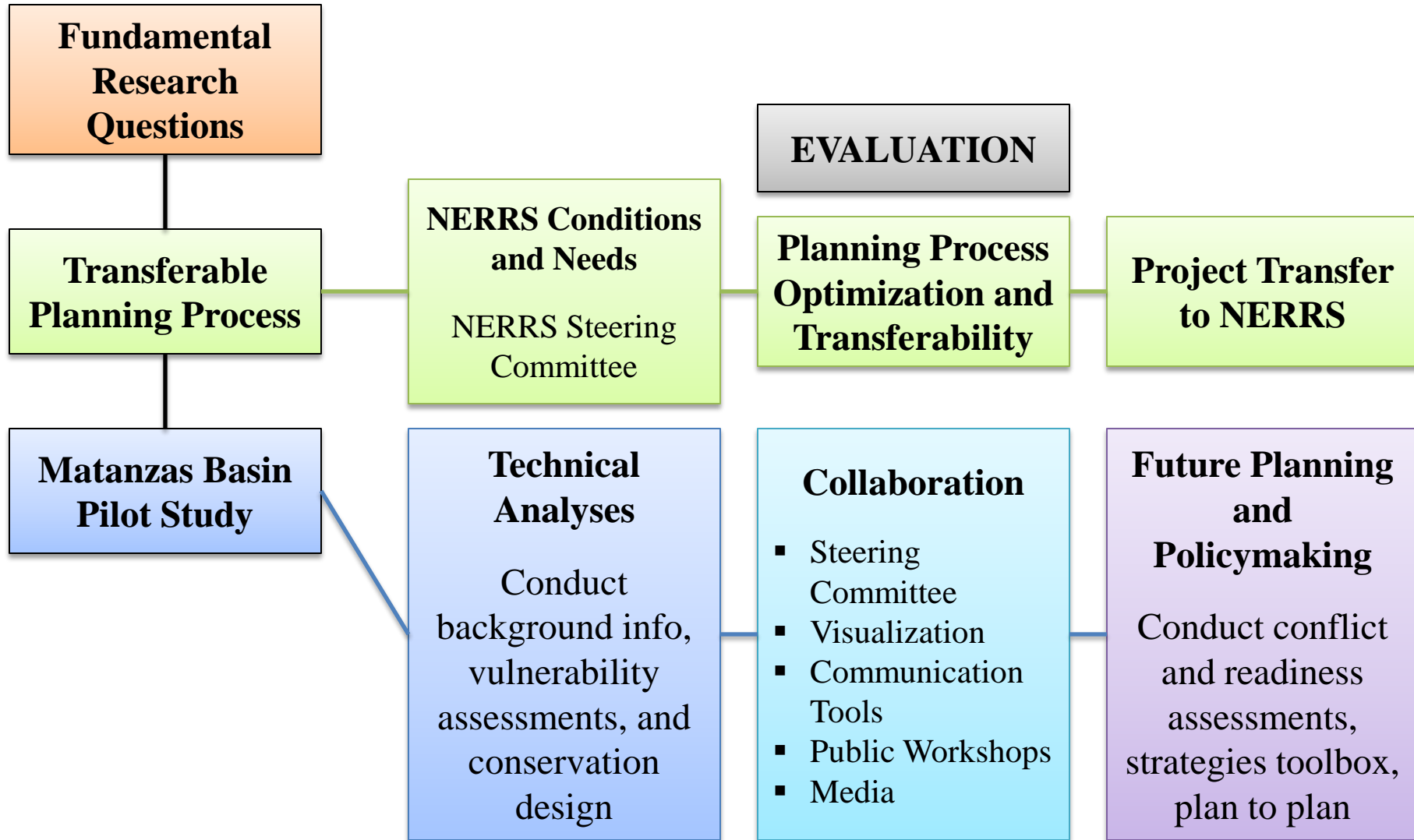




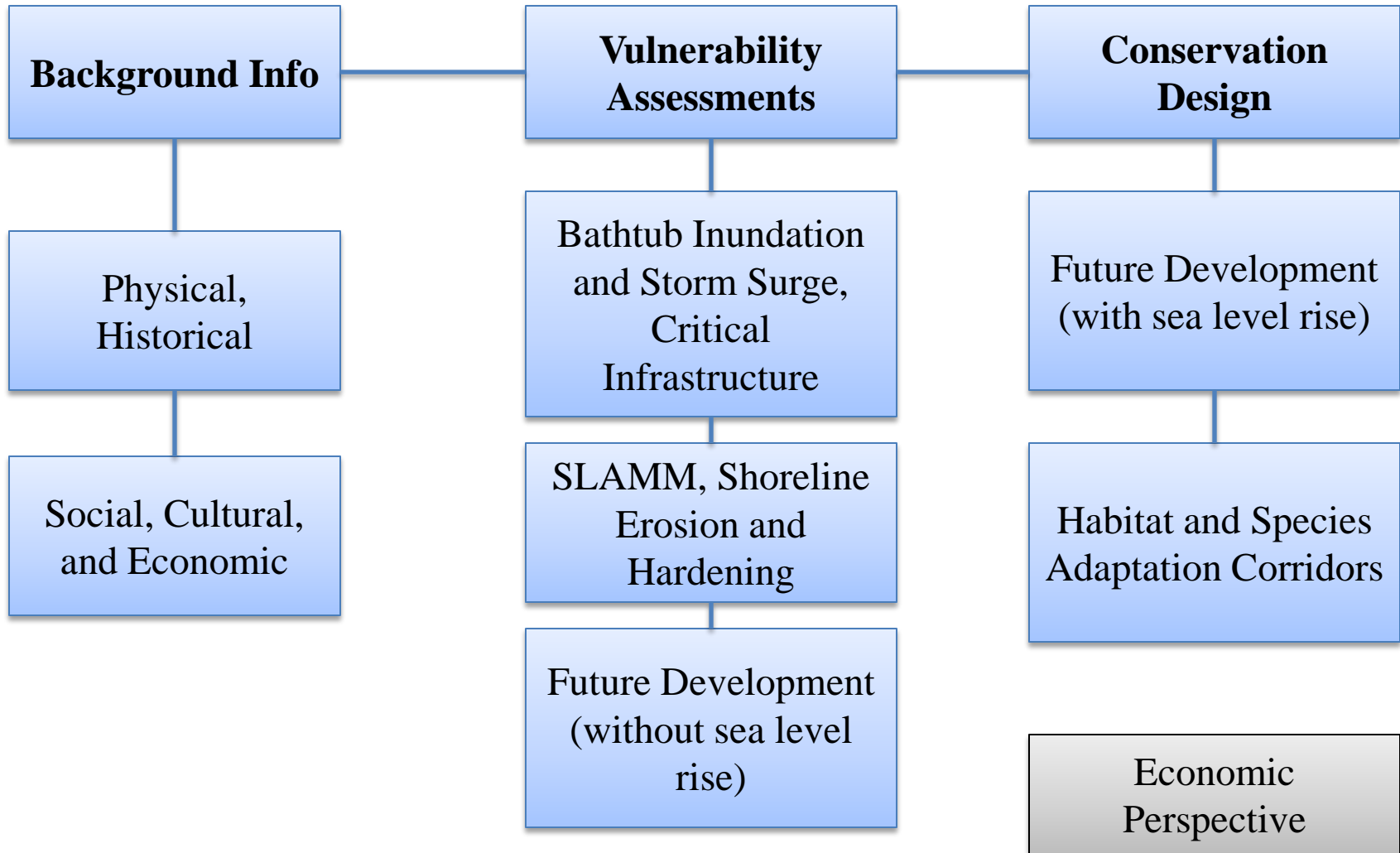
# Planning for Sea Level Rise

*Goal: Initiate planning*

# Project Management

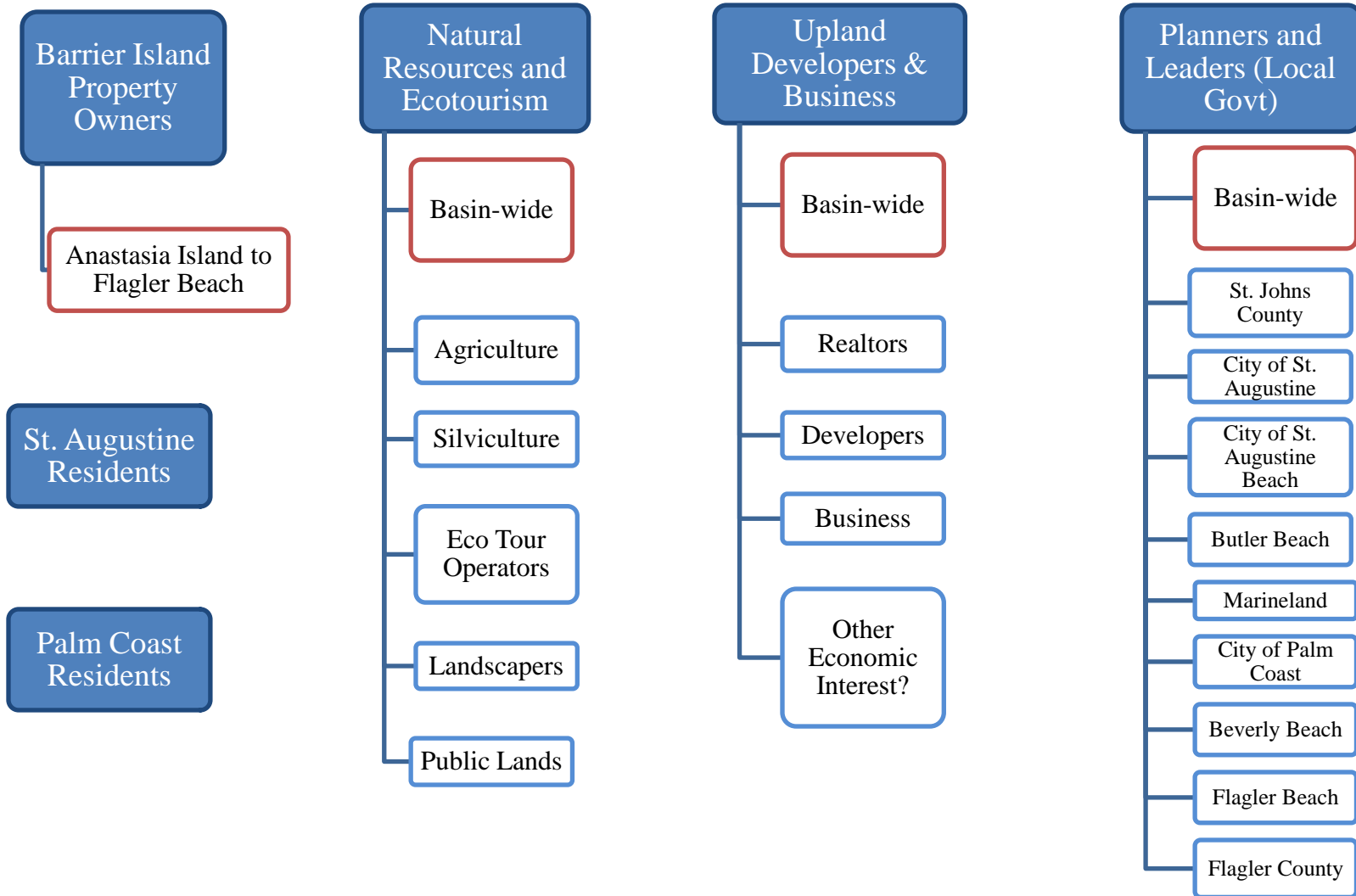


# Technical Analyses



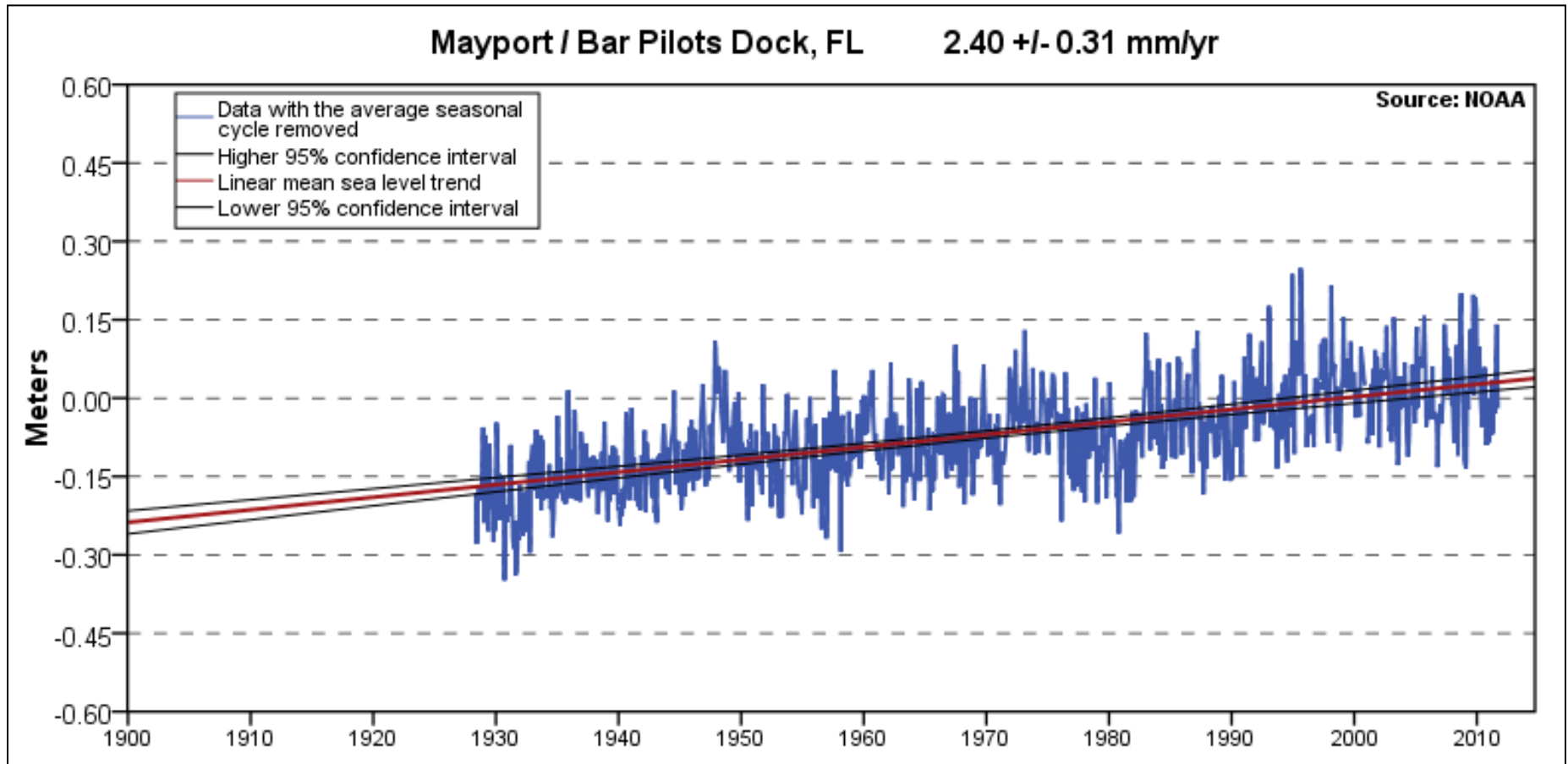


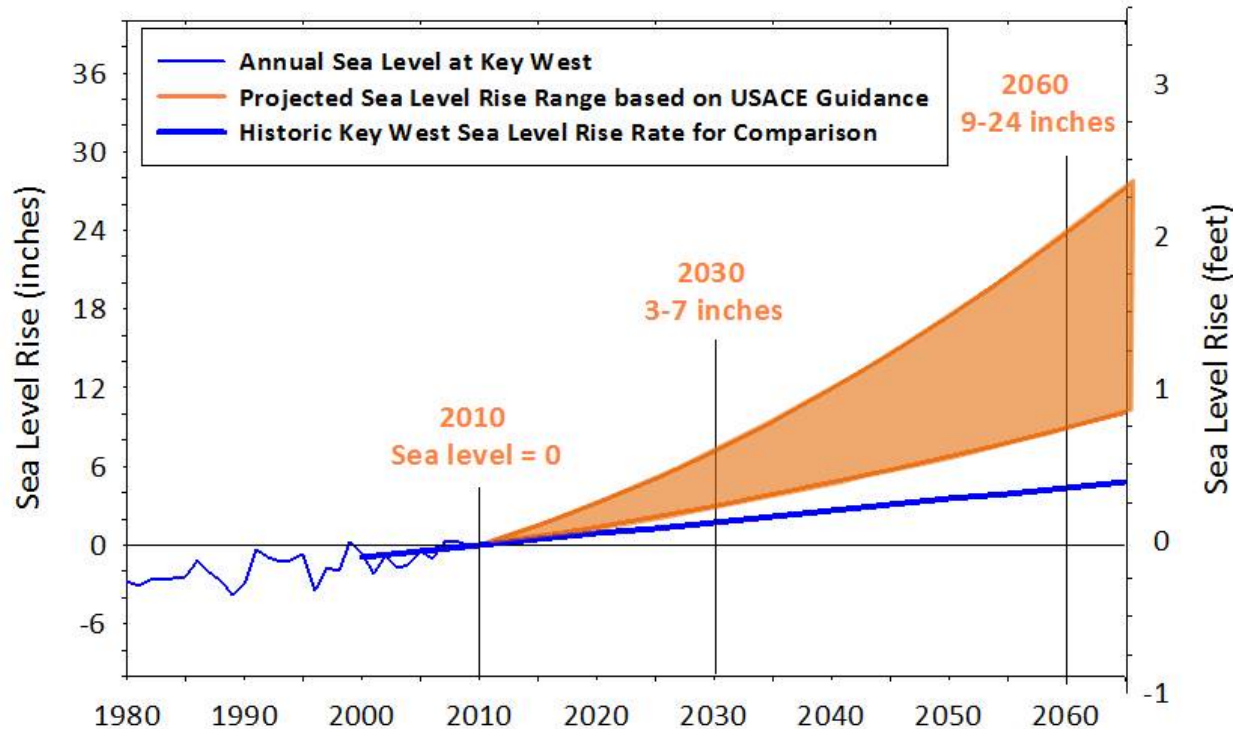
# Stakeholders





# Rise over past 100 years has been linear...





**Unified Southeast Florida Sea Level Rise Projection for Regional Planning Purposes.** This projection uses historic tidal information from Key West and was calculated by Kristopher Esterson from the United States Army Corps of Engineers using USACE Guidance (USACE 2009) intermediate and high curves to represent the lower and upper bound for projected sea level rise in Southeast Florida. Sea level measured in Key West over the past several decades is shown. The rate of sea level rise from Key West over the period of 1913 to 1999 is extrapolated to show how the historic rate compares to projected rates.

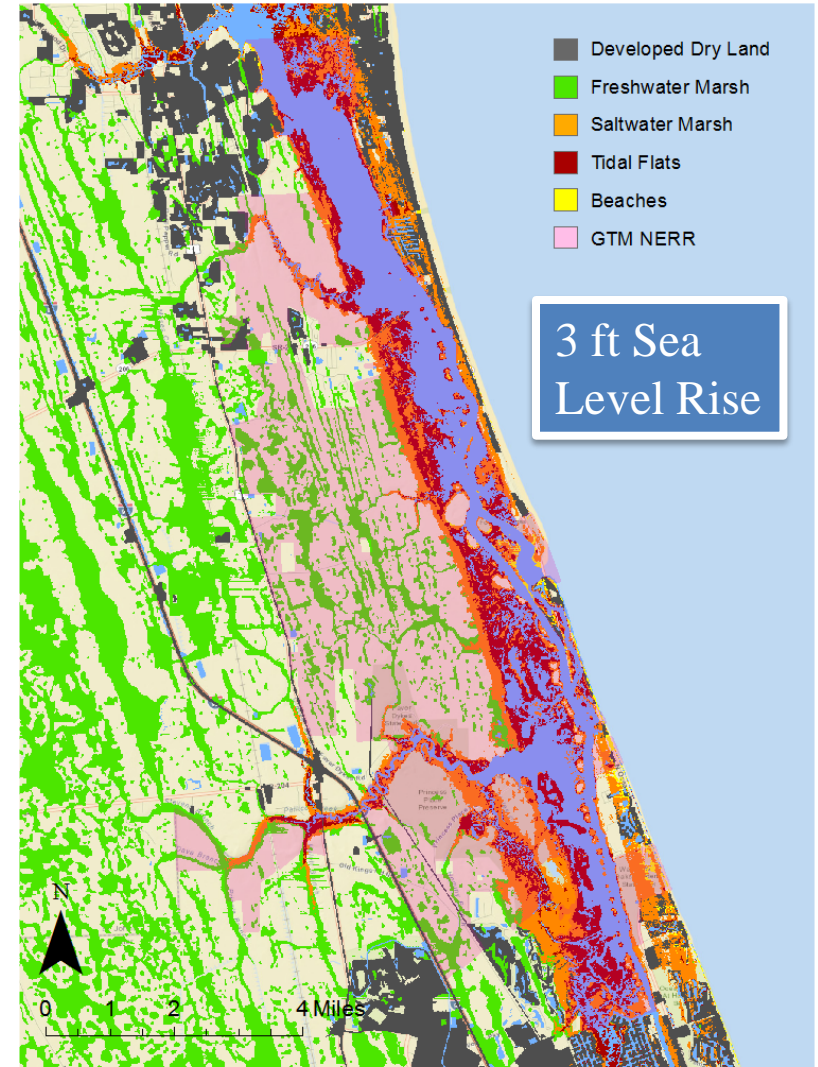
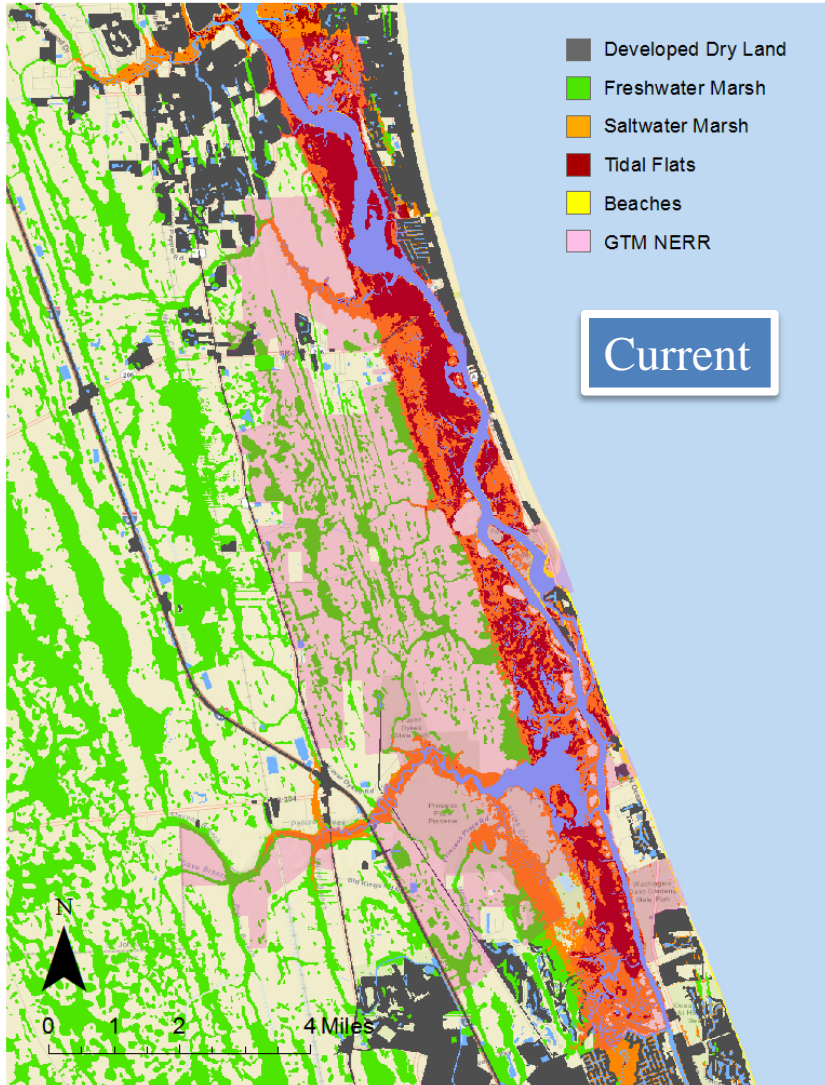
A synthesis of current literature agrees that global mean sea level will rise at least .2 meters (8 in) and no more than 2 meters (6.6 ft) by 2100

3 Feet Sea Level Rise by 2075

3 Feet Sea Level Rise by 2100



3 Feet Sea Level Rise beyond our planning horizon





*[www.planningmatanzas.org](http://www.planningmatanzas.org)*

# Florida Department of Environmental Protection



Emily Montgomery

Guana Tolomato Matanzas National Estuarine Research Reserve  
505 Guana River Rd.

Ponte Vedra Beach FL 32082

[Emily.Montgomery@dep.state.fl.us](mailto:Emily.Montgomery@dep.state.fl.us)

(904) 823 4500

